



WP4 S5: CSP GIS (Morocco) **the product**

Thomas Wanderer, Carsten Hoyer-Klick, Thomas Huld
ENDORSE Meeting, DLR Oberpfaffenhofen 04.07.2012



Aim of the product

To develop a web-based tool that allows users to determine the energy production potential for concentrated solar power (CSP) plants and to easily discover whether a given location is suitable for such power plants.

Status & Roadmap

➤ Prototype tests by prime user

February 2012



➤ User interface

~Juli/August 2012



➤ Data validation with help of prototype

Planned

Spring 2012

Postponed

after GUI is complete



➤ Integrate analysis service into GIS

~Juli/August 2012



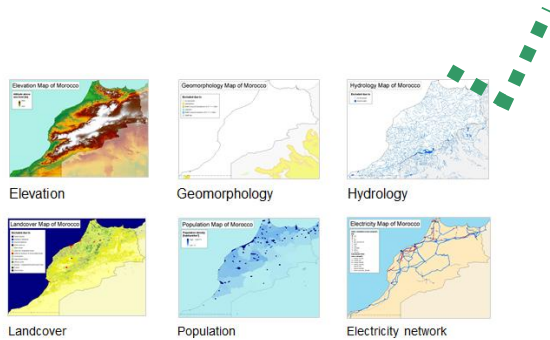
Prime User - Kernenergien

Kernenergien is a consulting company in the sector of solar sustainable energy. The portfolio of offer includes conception, planning and development of solar power stations.

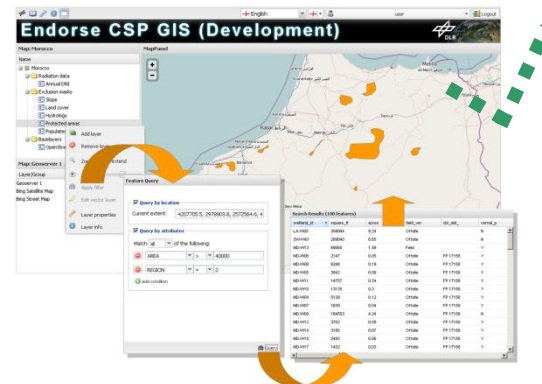
The range of activities comprises thermodynamic design layout, economic analysis as well as project development, project organisation and project handling of solar power stations.



Components

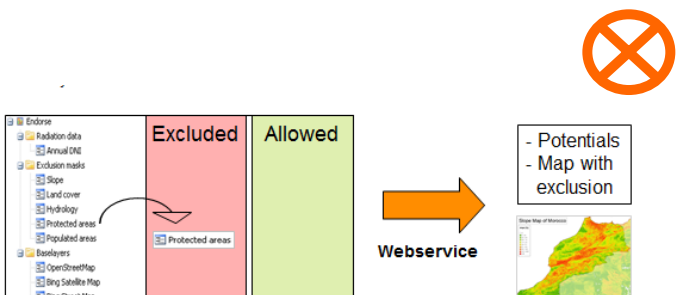


Data & Data Validtion



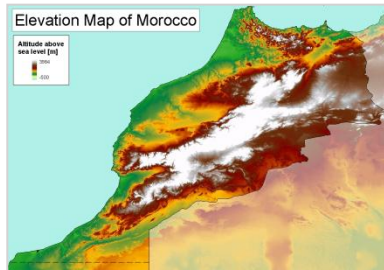
User Interface with:

- Map Vewer
- Layertools (Filtering)
- Adding layers
- CSP GIS Process
- Result Viewer

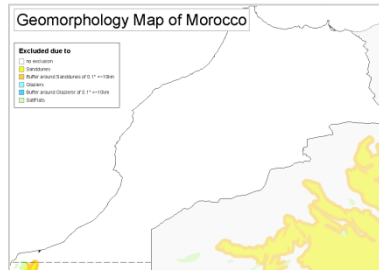


Processing

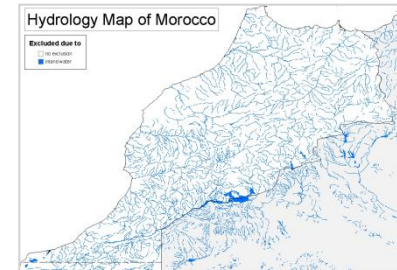
Product Data



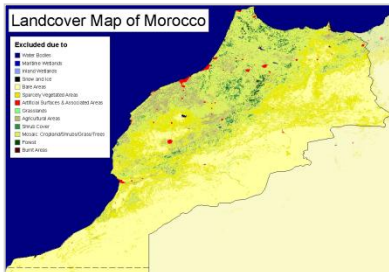
Elevation



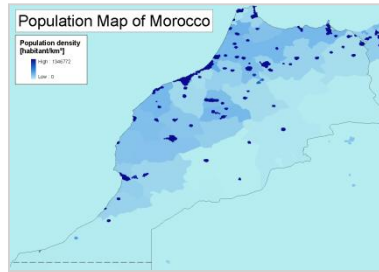
Geomorphology



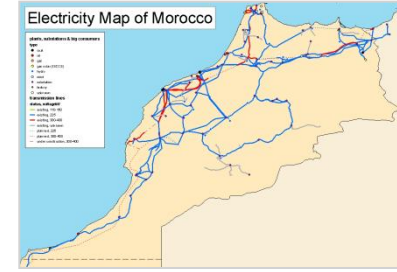
Hydrology



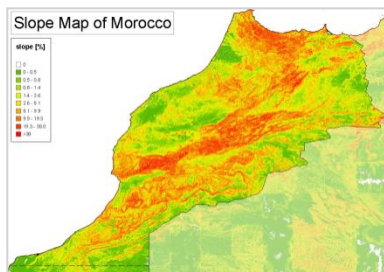
Landcover



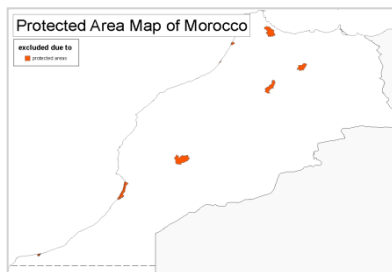
Population



Electricity network



Slope



Protected area



Radiation (DNI)

Product GUI with data layers and filter options

